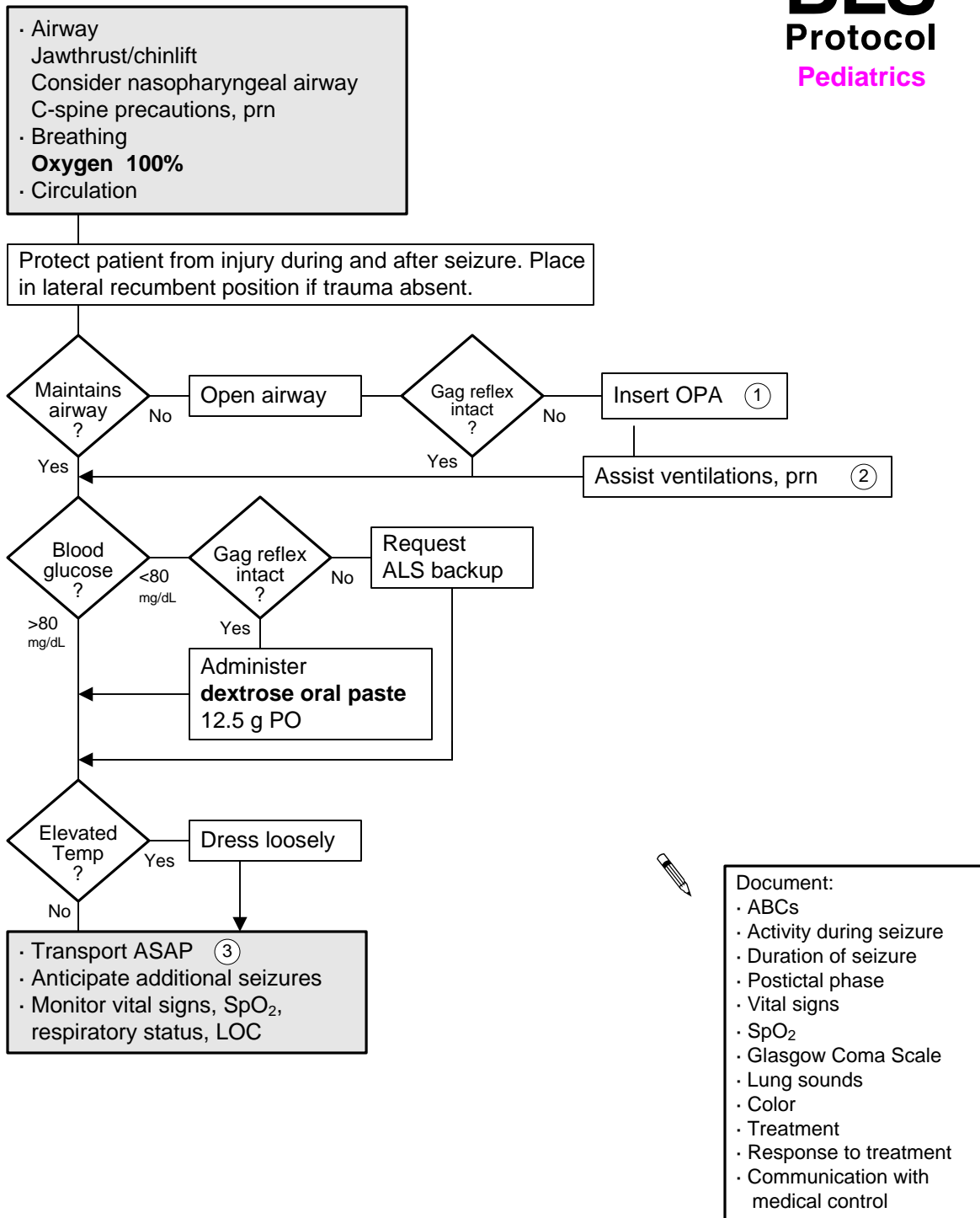


Seizure



- 1 Do not attempt to insert an OPA (oropharyngeal airway) during a seizure. Note: Most postictal patients do not need an OPA. If an OPA is used, be prepared to remove it as consciousness returns. Consider a nasopharyngeal (trumpet) airway.
- 2 Ventilatory assistance may be required, but most postictal patients do not need assistance. Consider ALS backup.
- 3 Provide a quiet, calm environment.