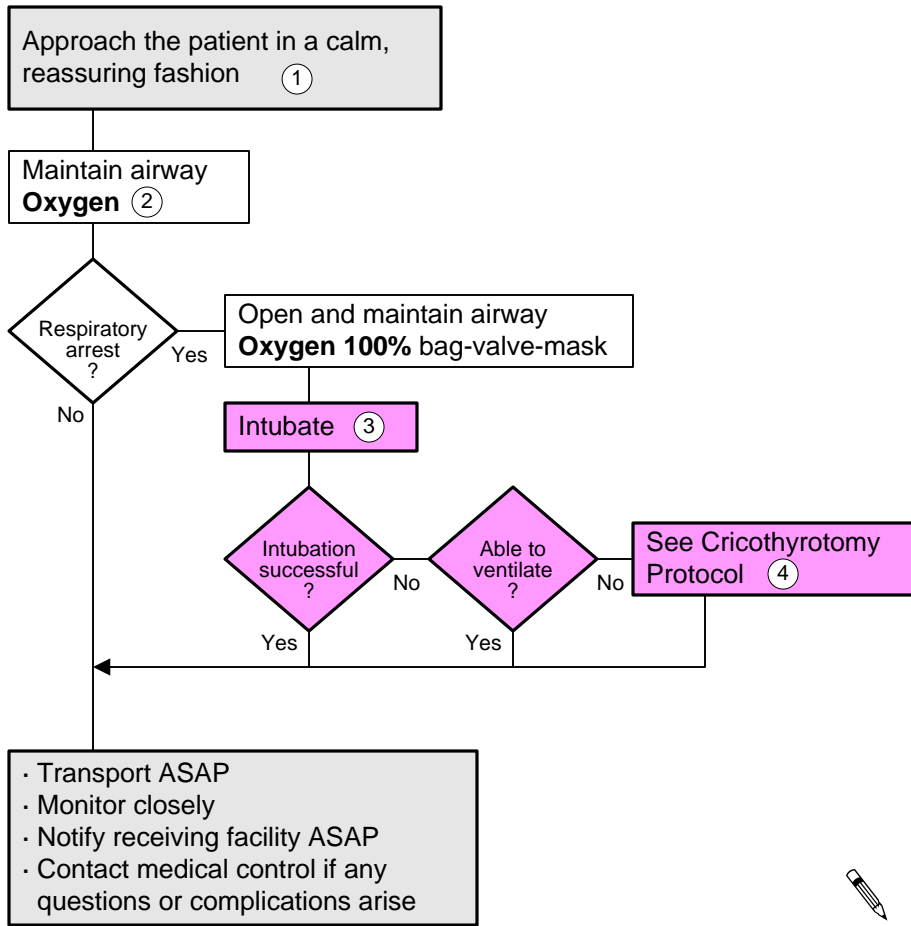


Epiglottitis/Croup

ALS BLS Protocol



· Transport ASAP
 · Monitor closely
 · Notify receiving facility ASAP
 · Contact medical control if any questions or complications arise



Document:
 · ABCs
 · Detailed assessment
 · Vital signs
 · SpO₂
 · Glasgow Coma Scale
 · Lung sounds
 · Color
 · Treatment
 · Response to treatment
 · Communication with medical control

Common Characteristics

Epiglottitis:

- Age usually >2 years
- Onset rapid
- Signs and symptoms: fever, often look sick; air hunger, nasal flaring, restlessness, drooling, retractions; want to sit upright

Croup:

- Age 6 months–3 years
- Onset gradual
- Signs and symptoms: often preceded by an upper respiratory infection; worse at night; may or may not have a fever; condition varies from mild to severe

- 1 Avoid startling the patient.
- 2 Consider blow-by or mask oxygen.
- 3 Intubate only if you are not able to oxygenate when assisting ventilations with a bag-valve-mask device.
- 4 Contact medical control before performing procedure.