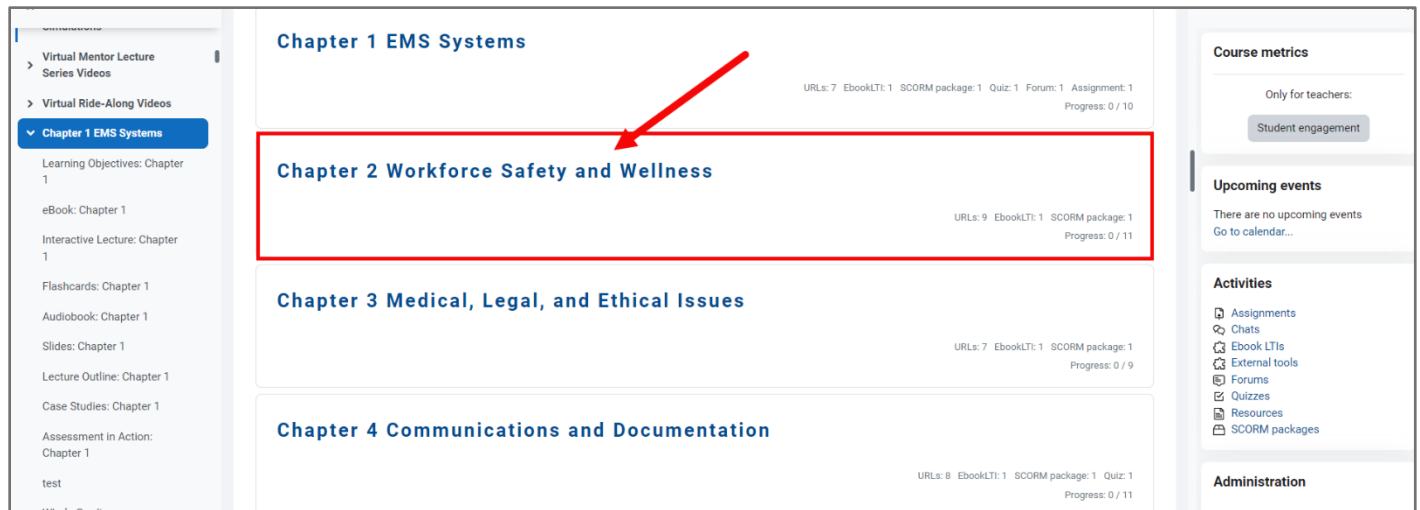


How to Create a Custom Quiz

This document contains instructions on creating a custom quiz within your course. You can create a quiz within any section of the course. First, you need to specify some initial settings for the quiz, such as the quiz name, and then you can add questions.

1. Navigate to the topic within the course in which you would like to place your quiz or test.

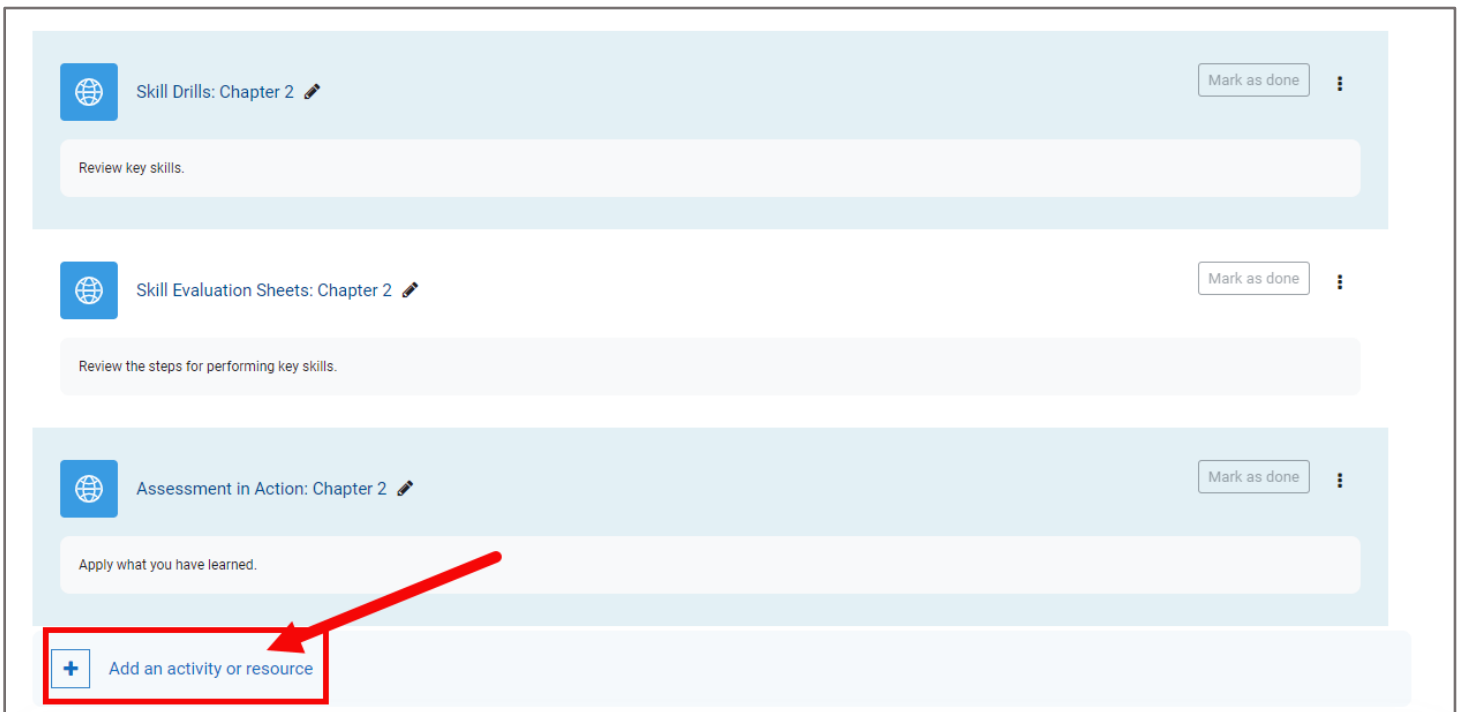


The screenshot shows a course navigation interface. On the left is a sidebar menu with the following items: Virtual Mentor Lecture Series Videos, Virtual Ride-Along Videos, Chapter 1 EMS Systems (highlighted in blue), Learning Objectives: Chapter 1, eBook: Chapter 1, Interactive Lecture: Chapter 1, Flashcards: Chapter 1, Audiobook: Chapter 1, Slides: Chapter 1, Lecture Outline: Chapter 1, Case Studies: Chapter 1, Assessment in Action: Chapter 1, test, and Whole-Course. The main content area displays a list of chapters: Chapter 1 EMS Systems (URLs: 7, eBookLTI: 1, SCORM package: 1, Quiz: 1, Forum: 1, Assignment: 1, Progress: 0 / 10), Chapter 2 Workforce Safety and Wellness (URLs: 9, eBookLTI: 1, SCORM package: 1, Progress: 0 / 11), Chapter 3 Medical, Legal, and Ethical Issues (URLs: 7, eBookLTI: 1, SCORM package: 1, Progress: 0 / 9), and Chapter 4 Communications and Documentation (URLs: 8, eBookLTI: 1, SCORM package: 1, Quiz: 1, Progress: 0 / 11). A red box highlights the 'Chapter 2 Workforce Safety and Wellness' entry, and a red arrow points to it from the top right. On the right side of the interface, there are sections for Course metrics (Only for teachers, Student engagement), Upcoming events (There are no upcoming events, Go to calendar...), Activities (Assignments, Chats, eBook LTIs, External tools, Forums, Quizzes, Resources, SCORM packages), and Administration.

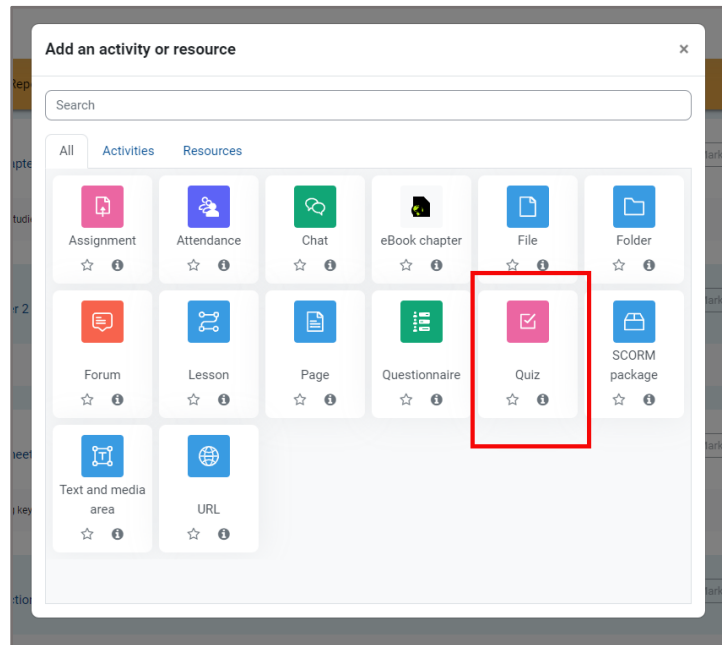
- Next, toggle on the course **Edit Mode** using the button at the top of the page (if it's not on already). The page is now enabled for editing, so you can rearrange elements, add activities or resources, and make other changes.



- Scroll as needed to the bottom of the contents section and click **Add an activity or resource**.



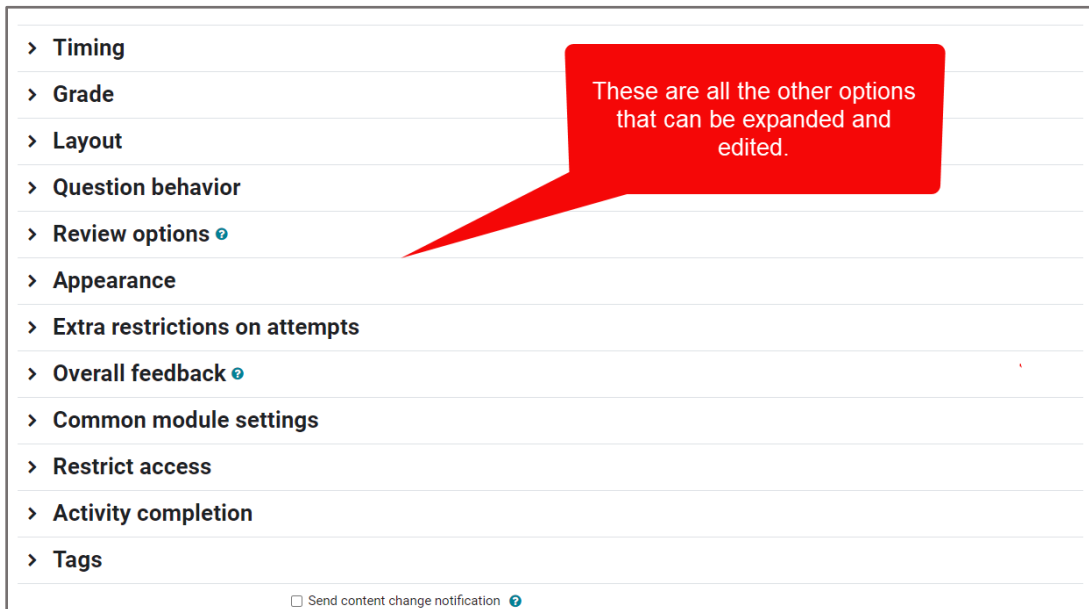
4. A window opens, listing all the activities or resources you can add to the course. Select the **Quiz** option from the menu provided. A new quiz settings page opens, with the General section expanded by default.



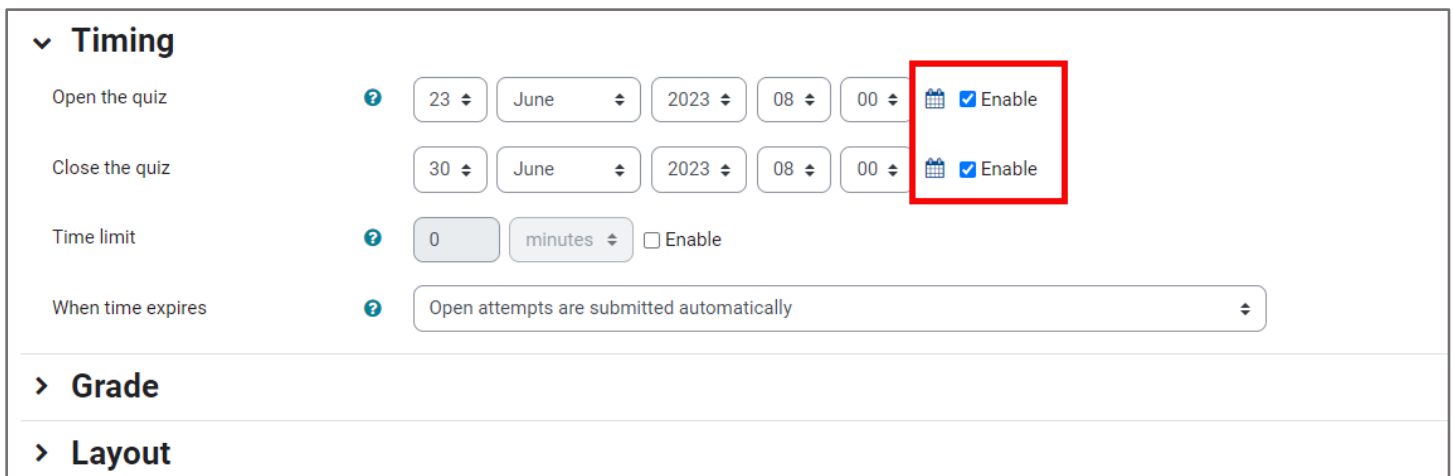
5. The first field, Name, displays a **red exclamation icon**, indicating it is a required field you must complete to create the quiz. Enter a name for the quiz in the **Name** field. Enter a description, if desired, in the **Description** field. Use the toolbar at the top of the Description field to format the text and add hyperlinks, images, videos, or other media. If you want the description to appear on the course page, click the **Display description on course page** checkbox to add a checkmark.

A screenshot of a web application page titled "Adding a new Quiz to Chapter 2 Workforce Safety and Wellness". The page has a "General" section expanded. The "Name" field contains "Chapter 2 Quiz" and has a red exclamation mark icon to its left. The "Description" field contains the text "Chapter 2 quiz on Workplace Safety and Wellness. Please complete after submitting your Chapter 2 assignment." and has a toolbar above it with various icons for text formatting and media insertion. Below the description field is a checkbox labeled "Display description on course page" which is checked. The page also has sections for "Timing" and "Grade" which are currently collapsed.

6. Continue by scrolling down the page and expanding each section on the quiz settings page to toggle additional options as desired. The remaining steps below walk through frequently used options.



7. To set timing parameters, such as when students can open the quiz, when they must complete it, and how long they are able to spend on each attempt, expand the **Timing** section. For each setting you wish to set, first click the **Enable** checkbox to its right, then apply desired parameters. Ensure the Enable checkbox remains checked to apply the setting.



8. To set a minimum grade required for a student to pass the quiz, number of attempts they are allowed for the quiz, and how to calculate your students' final scores when more than one attempt is allowed, expand the **Grade** section and toggle these options as needed.

Grade category: Uncategorized

Grade to pass: 70

Attempts allowed: Unlimited

Grading method: Highest grade

Layout

Question behavior

9. To manage how and when students may review their quiz results, expand the **Review options** section and adjust settings as needed. Note, clicking the question mark bubbles for more information in this section is strongly recommended, as there are many options to choose from. For more detail on these options, please revisit our Training Library to view a document and/or recorded tutorial on the subject of managing how students review quiz results.

Review options

During the attempt

Whether the student can review the attempt at all.

Later, while the quiz is still open

After the quiz is closed

10. Additional **Quiz Settings** sections with options to consider include:

Section name...	Options' functions...
Layout	How many questions should appear on each page of the quiz, and how students can navigate through questions.
Question behavior	Whether and how to provide feedback on student attempts on a question, whether to allow multiple attempts, whether to shuffle answer choices, and whether each question builds on the previous one.
Review options	What feedback students can see, such as marks or the right answer, and when they can view the feedback, such as while attempting a quiz, after completing it, or after the quiz closes.
Appearance	Whether to show the user's picture, how to display decimal places in question grades, and whether to show other course blocks during attempts.
Extra restrictions on attempts	Password and security requirements for accessing the quiz, including an enforced delay between attempts, browser security and network access requirements.
Overall feedback	Set custom automated feedback for each grade range you wish to define.
Common module settings	Whether to show the quiz on the course page or hide it from students, whether to include an ID number, and whether to group the quiz (including the option to add group access restriction).
Restrict access	Restrictions based on specific course prerequisites including activity completion, dates, grade achievements, individual users, and complex combinations.
Activity completion	Whether and how to track and determine student completion of the quiz such as grade achievement,

	number of attempts, and/or expected time for completion (soft deadline).
Tags	Apply custom or default tags to help categorize the quiz.

11. Once you've specified the desired settings, check the **Send content change notification** option to automatically alert course participants of the quiz creation or settings changes. Only users who can access the activity or resource will receive the notification. Once everything is finished, click **Save and display**. The quiz page appears, displaying key details about the quiz and a message that no questions have been added.

> Restrict access

> Activity completion

> Tags

Send content change notification ?

Save and return to course Save and display Cancel

12. From here, click the **Add question** button. The quiz contents page will open, where you can now add and manage questions.

QUIZ Chapter 2 Quiz

Navigate Premier Access for Emergency Care and Transportation of the Sick and Injured, 12e(2354FF-GI) > Chapter 2 Workforce Safety and Wellness > Chapter 2 Quiz

Mark as done

Opened: Friday, June 23, 2023, 8:00 AM
Closes: Friday, June 30, 2023, 8:00 AM

Chapter 2 quiz on Workplace Safety and Wellness. Please complete after submitting your Chapter 2 assignment.

Add question

Grading method: Highest grade
Grade to pass: 70.00 out of 100.00

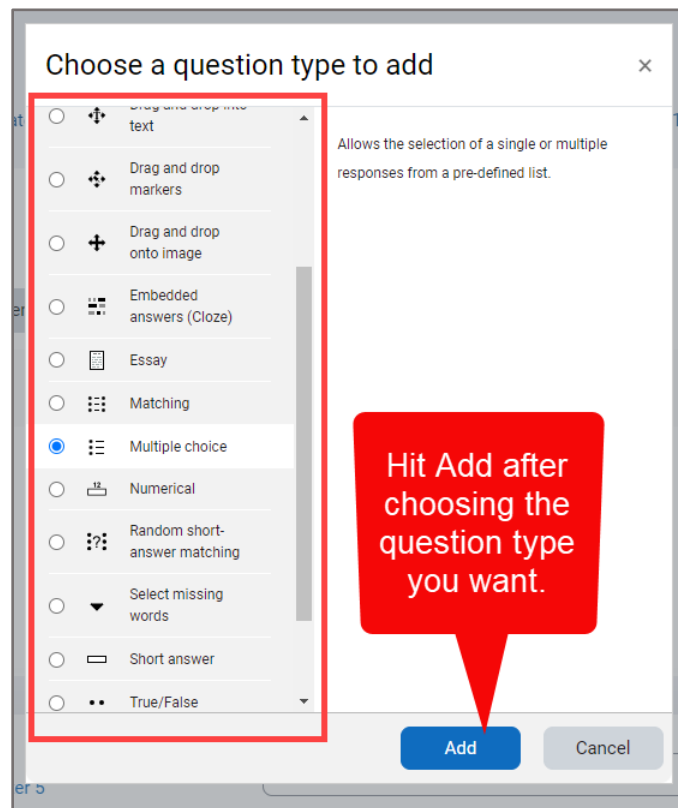
No questions have been added yet

Back to the course

13. To the right of the page, click the blue **Add** dropdown, then select your preferred method for selecting questions. Choose **a new question** if you want to create a new question from scratch, **from question bank** if you want to choose questions from the current course test bank, or **a random question** if you want to pull random questions from a specified category within the course test bank.



14. If/when adding **a new question**, select the question type from the popup window and proceed by building the question. Ensure that you save your custom questions in a category location within the course test bank to easily keep track of them.



Technical Support: www.jblearning.com/techsupport | support@jblearning.com | 1-978-443-5000 | M-F 8:30am – 8:00pm

15. Using the [add] **from question bank** option opens a popup window where you may choose a test bank category from which to select questions by using the **Select a category** dropdown menu. Categories may be organized by chapter, lesson, and/or assessment type. The number of questions available in each category is listed parenthetically directly to its right. By default, all questions are unique to each category and do not repeat elsewhere in the test bank.

Add from the question bank at the end [X]

Select a category:

Default for Advantage Access for Emergency Care and Transportation of the Sick and Injured, Twelfth Edition

Quiz: Chapter 5 Quiz
Top for Chapter 5 Quiz
Default for Chapter 5 Quiz

Course: Navigate Premier Access for Emergency Care and Transportation of the Sick and Injured, 12e(2354FF-Giddings)
Top for Navigate Premier Access for Emergency Care and Transportation of the Sick and Injured, 12e(2354FF-Giddings)
Default for Advantage Access for Emergency Care and Transportation of the Sick and Injured, Twelfth Edition

Quizzes

- Chapter 01 - Chapter Quiz (20)
- Chapter 02 - Chapter Quiz (20)
- Chapter 03 - Chapter Quiz (20)
- Chapter 04 - Chapter Quiz (20)
- Chapter 05 - Chapter Quiz (20)**
- Chapter 06 - Chapter Quiz (20)
- Chapter 07 - Chapter Quiz (20)
- Chapter 08 - Chapter Quiz (20)
- Chapter 09 - Chapter Quiz (20)
- Chapter 10 - Chapter Quiz (20)
- Chapter 11 - Chapter Quiz (20)
- Chapter 12 - Chapter Quiz (20)
- Chapter 13 - Chapter Quiz (20)

16. Selecting a category displays its questions below within the popup. Use the checkboxes to the left of the questions to select them. To view a question in full detail, click the **preview** button or magnifying glass to its right.

Select a category:
Chapter 05 - Chapter Quiz (20)

No tag filters applied

Filter by tags...

Show question text in the question list

Search options ▾
 Also show questions from subcategories

Also show old questions

Questions

- A 5-year-old boy has fallen and has a severe deformity of the forearm near the wrist. He has possibly su...
- A diabetic patient has polydipsia. This means that she: **Complexity_Difficult** **Ahead_9781284243789_Master Tables**
- A fracture of the humerus just above the elbow would be described as a: **Complexity_Moderate** **Ahead_9781284243789_Master Tables**
- A patient has fractured both femurs. Anatomically, these injuries would be described as being: **Complexity_Moderate** **Ahead_9781284243789_Master Tables**
- A patient in a semi-reclined position with the head elevated to facilitate breathing is in the _____ p...
- A patient with a pneumothorax has unilateral chest expansion. This means that: **Complexity_Moderate** **Ahead_9781284243789_Master Tables**
- A pregnant patient is diagnosed with hyperemesis gravidarum. This means that: **Complexity_Difficult** **Ahead_9781284243789_Master Tables**
- A young male jumped from a tree and landed feet first. Which aspect of his body has sustained the initi...
- After applying a tourniquet, the injury from a patient's leg stops bleeding. This is called: **Complexity_Moderate** **Ahead_9781284243789_Master Tables**
- An intoxicated 40-year-old male is found lying face down. How would you document his body's position...
- Enlargement of the liver is called: **Complexity_Moderate** **Ahead_9781284243789_Master Tables** **Subject_Chapter_5, Page**
- In relation to the chest, the back is: **Complexity_Moderate** **Ahead_9781284243789_Common Direction, Movement, an** **Subject**
- In relation to the wrist, the elbow is: **Complexity_Easy** **Ahead_9781284243789_Common Direction, Movement, an** **Subject**
- Movement or motion away from the body's midline is called: **Complexity_Easy** **Ahead_9781284243789_Common D**
- The _____ of the heart is the inferior portion of the ventricles. **Complexity_Moderate** **Ahead_9781284243789**
- The term "pericardiocentesis" means: **Complexity_Difficult** **Ahead_9781284243789_Master Tables** **Subject_Chapter_5, P**

Click here to choose the questions you want to add to the quiz/exam.

Click here to preview the full question (and answers for multiple choice).

Terminology **Taxonomy_Recall** **Objective_5-3_Describe the following directional** A 5-year-old boy has fallen and has a severe ...

means ...

of the humerus just above the elbow ...

Describe the following directional A patient has fractured both femurs. ...

Describe the prone, supine, Fowler, A patient in a semi-reclined position with the ...

A patient with a pneumothorax has unilateral ...

nant patient is diagnosed with ...

Describe the following directional A young male jumped from a tree and landed feet...

er applying a tourniquet, the injury from a ...

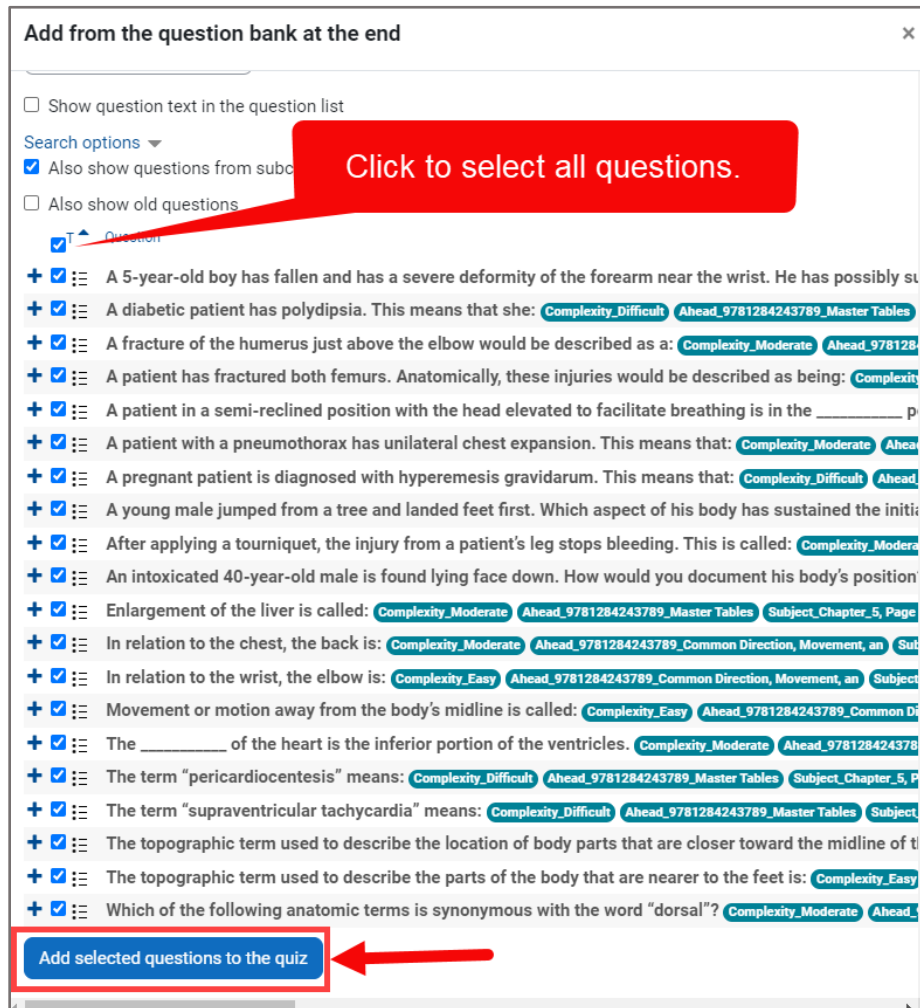
Describe the prone, supine, Fowler, An intoxicated 40-year-old male is found lying ...

y from the body's midline...

of the heart is the inferior ...

Technical Support: www.jblearning.com/techsupport | support@jblearning.com | 1-978-443-5000 | M-F 8:30am – 8:00pm

17. To quickly select all questions on the page at one time, click on the **Select all** checkbox at the top of this list. When satisfied with your selections, scroll down and click the **Add selected questions to the quiz button**.



18. To add a specified number of questions to the quiz at random, choose the third **Add** option for [adding] a random question.



Technical Support: www.jblearning.com/techsupport | support@jblearning.com | 1-978-443-5000 | M-F 8:30am – 8:00pm

19. Use the **Category** dropdown menu from the popup window to select the bank's category from which you wish to draw questions. Then specify the number of questions you wish you to randomly include from the designated category using the **Number of random questions** dropdown. Make sure you do not choose a number that exceeds the number of questions available in the selected category.

Add a random question at the end [X]

Existing category | [New category](#)

Random question from an existing category

Category: Chapter 05 - Chapter Quiz (20)

Include questions from subcategories too

Tags: Any tags

Search [v]

Number of random questions: 10

Questions matching this filter: 20

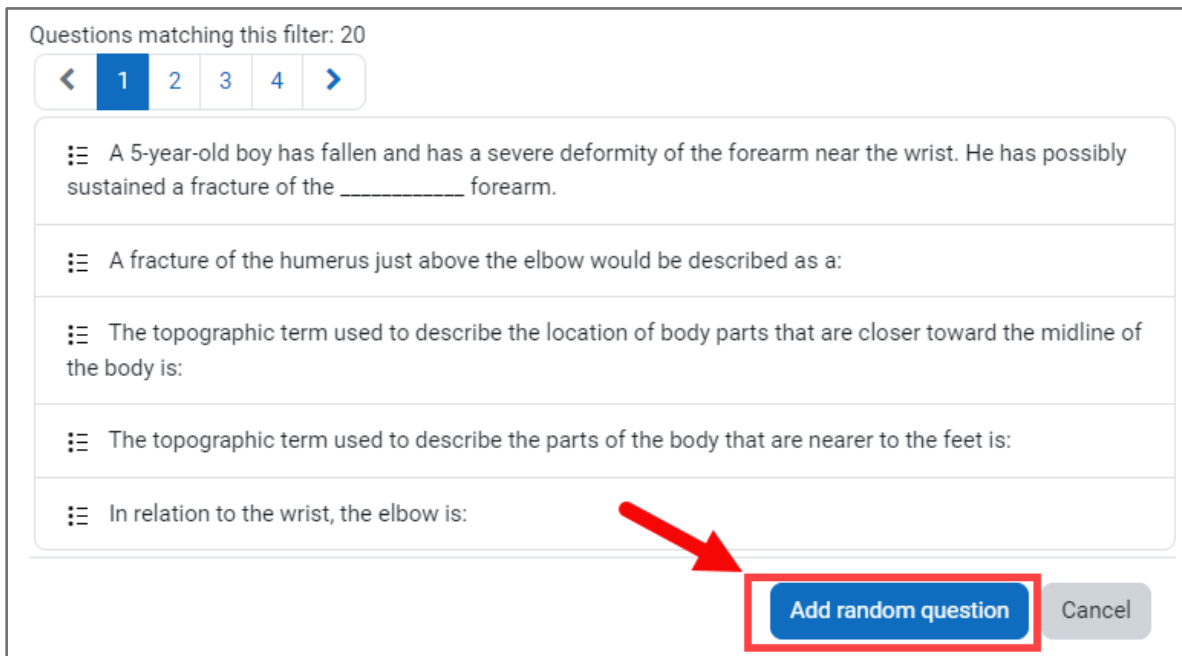
< 1 2 3 4 >

- A 5-year-old boy has fallen and has a severe deformity of the forearm near the wrist. He has possibly sustained a fracture of the _____ forearm.
- A fracture of the humerus just above the elbow would be described as a:
- The topographic term used to describe the location of body parts that are closer toward the midline of the body is:
- The topographic term used to describe the parts of the body that are nearer to the feet is:
- In relation to the wrist, the elbow is:

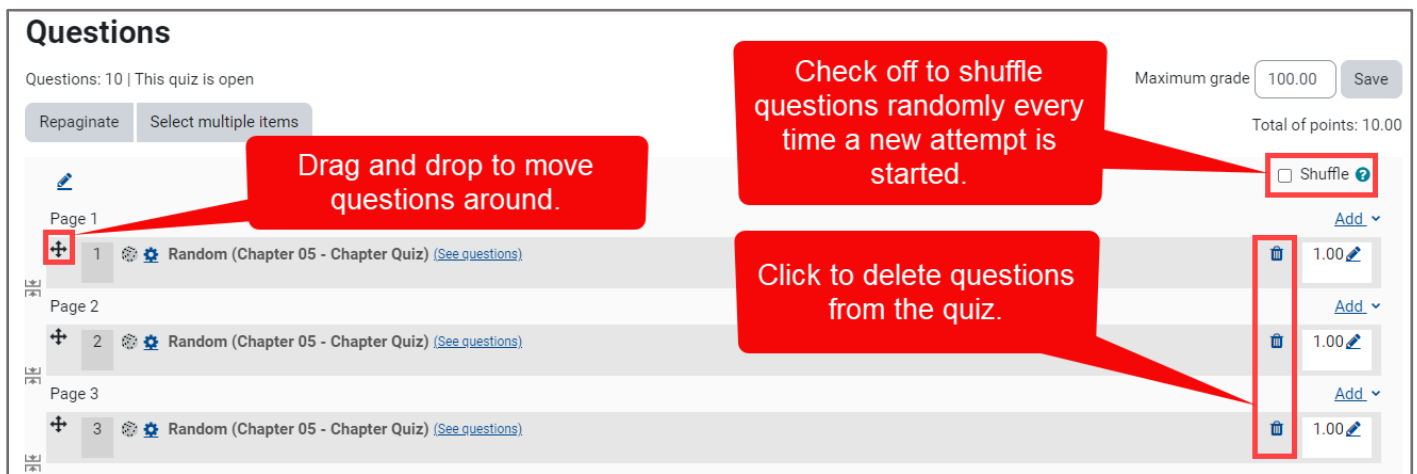
[Add random question](#) [Cancel](#)

Technical Support: www.jblearning.com/techsupport | support@jblearning.com | 1-978-443-5000 | M-F 8:30am – 8:00pm

20. After making the desired selections, scroll down and click the **Add random question** button. Note, any random question added functions as a placeholder for a question that will be randomly selected from the specified category for every individual attempt. In other words, the questions will vary between attempts.



21. Continue adding questions to the quiz using your preferred options. When finished, choose whether to shuffle the selected questions' sequence for each individual attempt by toggling the **Shuffle** checkbox. You may also **Delete** questions using the trash icon to their right and drag and drop individual questions to adjust their sequence using the **compass arrow** to their left. If you rearrange question sequencing, click the **Repaginate** button when done to evenly distribute them according to the quiz page settings.



22. All questions added are automatically saved as they are populated to the body of the quiz. The **Save** button on the quiz page only applies in the event you choose to change the **Maximum grade** field which determines the number of points the quiz is worth in the gradebook.

Questions

Questions: 5 | This quiz is closed

Repaginate Select multiple items

Maximum grade 100.00 Save

Total of points: 5.00

Shuffle

Page 1 Add

1 A critical incident stress debriefing should be conducted no longer than _____ hours following the incident. A critic... Always latest 1.00

Page 2 Add

2 Characteristics of eustress following dispatch to a high-speed motor vehicle collision may include: Characteristics of of... Always latest 1.00

Page 3 Add

3 Hazards that are associated with a structural fire include all of the following, except: Hazards that are associated wit... Always latest 1.00

Page 4 Add

4 Quid pro quo, a type of sexual harassment, occurs when the harasser: Quid pro quo, a type of sexual harassment, ... Always latest 1.00

Page 5 Add

5 The most effective way to preserve your own body heat when functioning in cold, wet weather is to: The _most_ effec... Always latest 1.00

23. When you are satisfied with the questions you have added, you may return to any other course page and continue your work. You may also preview the quiz by returning to the main quiz page by clicking **Quiz** from the navigation bar, and then the **Preview quiz** option.

JONES & BARTLETT LEARNING NAVIGATE

Home Dashboard My courses Site administration

Quiz Settings Questions Results Question bank More

QUIZ Chapter 2 Quiz

JONES & BARTLETT LEARNING NAVIGATE

Home Dashboard My courses Site administration

Quiz Settings Questions Results Question bank More

QUIZ Chapter 2 Quiz

Mark as done

Preview quiz

Grading method: Highest grade

Technical Support: www.jblearning.com/techsupport | support@jblearning.com | 1-978-443-5000 | M-F 8:30am – 8:00pm